



Setup Guide

Smart Camera



Equipment Overview

Press Box Kit

1. Router & Power Supply
2. Extension Cord
3. EDGE Replay Box



Sideline Kit

4. Switch & Power Supply
5. Switch Battery & Charger



Endzone Kit

6. Chargers & Extra Cables
7. Smart Camera & Battery
8. Endzone Bridge Battery



IMPORTANT: Keep camera and battery on Smart Camera head at all times. Keep zoom cable plugged into Sony camera at all times.

Network Bag

Press Box: Bridge Antenna, iPad Antenna & Tripod

Sideline: Bridge Antenna, iPad Antenna, Booster & Tripod

Endzone: Bridge Antenna & POE Injector

Inside Pocket: Screw-on Antennas (x4) for Press Box iPad Antenna. 2 for use and 2 extras.



IMPORTANT: Always unscrew small antennas from iPad antennas and store them in the Network Bag's inner pocket.

Tower Bag

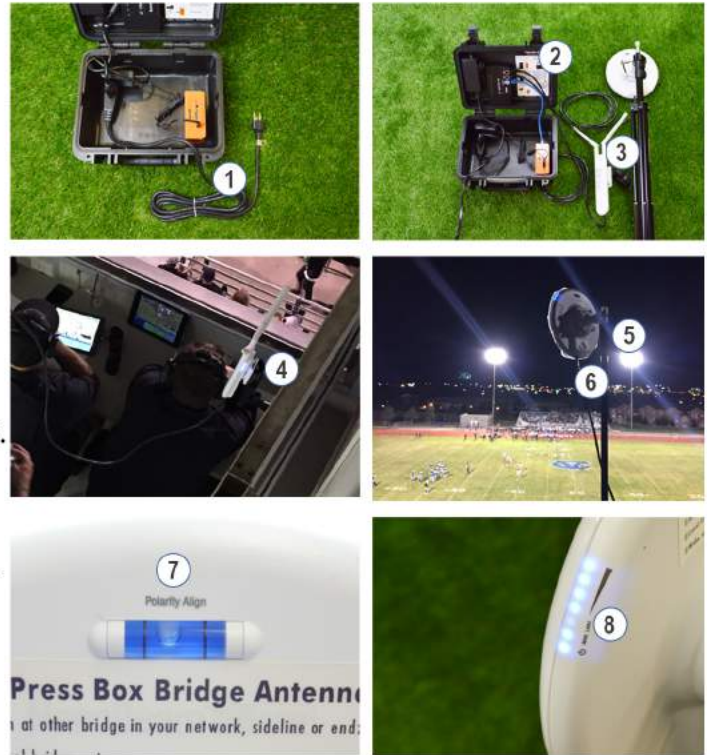
1. Tower
2. Rain Gear Pocket
3. Ethernet Cable Pocket
4. Extra Pocket



Wireless Network Setup

Location: Press Box

1. Open Press Box hard case & plug in extension cord.
Router takes 1 minute to boot.
2. Connect iPad & Bridge antennas to Router.
3. Screw small antennas on the iPad antenna and put small antennas at 45°.
4. Suction the iPad Antenna to inside of the window next to your coaches. All iPads in Press Box need to be within 15 ft. of iPad antenna and in the same room. You can use a longer Ethernet cable to extend the iPad antenna's range.
5. Raise tripod with Bridge antenna above obstructions. All Bridge antennas must be line of sight of each other. You can put the Bridge antenna on top of press box if needed.
6. Aim Bridge antenna down between the 25 yardline and the endzone where your endzone camera will be set up.
7. Level the Bridge antenna.
8. After you set up the Sideline and Endzone Bridges, your Press Box Bridge will have 6 blue lights on the side of it.



IMPORTANT: Only connect iPads that are in the press box to the SportScopePressBox Wi-Fi network. Stay within 15 ft. of iPad antenna for best connection.

Optional: Add Press Box Replay

1. Connect your camera to the camera port of the EDGE Replay box.



Location: Sideline, 25 YL Closest to Endzone Camera

1. Press battery until Switch PWR light comes ON. (4-5 secs.)
2. Clamp Bridge antenna to tripod and connect iPad and Bridge antennas to Switch.
3. Raise tripod with antennas to head height.
4. Clamp Booster to tripod and then connect to Sideline iPad antenna with attached cables.
5. Aim Booster down your sideline from the 25 YL.
6. Aim Sideline Bridge antenna up to the Press Box Bridge.
7. Level the Bridge antenna. After the Sideline and Press Box Bridge antennas link (2 mins.) you will see 6 blue lights on the side of them.



IMPORTANT: Only connect iPads that are on the sideline to the SportScopeSideline Wi-Fi network. Stay between the 25 yardlines for best connection.

30' Tower Setup

1. Unhook the wheel plate strap.
2. Take the wheel plate off the bag.
3. Take the tower out of the bag.



4. Place the tower into the wheel plate.
5. Open all 4 legs and make sure each foot is firmly on the ground.



6. Make sure the tower is level on each axis.
7. Tighten the knob for each leg.



20' Tower Setup

1. Take the tower out of the bag.
2. Carry tower to the filming location.
3. Place tower upright and loosen the top knob.



4. Open the tower legs.
5. To fully open, lift tower by the pole and press down on the top collar to spread out the legs.



6. Loosen the bottom knob and slide the pole down until it hits the ground.
7. Tighten the top and bottom knobs



Smart Camera Setup

1. Take the Smart Camera out of the hard case and screw on to the tower. Do not cross-thread.
2. Turn camera battery ON by pressing the small LED button and connect it to the Sony camera's USB port.
3. Tuck battery into camera's handle strap.

Tip: Keep the Sony camera on the Smart Camera with its zoom cable connected at all times.



4. Open camera view finder to turn camera ON.
5. Connect the small end of HDMI cable to camera.
6. Connect the large end of HDMI cable to blue box.
7. Insert memory card if not already in.

IMPORTANT: The memory card is needed for the zoom to work when recording to the memory card. If the memory card gets full, the zoom will stop working.



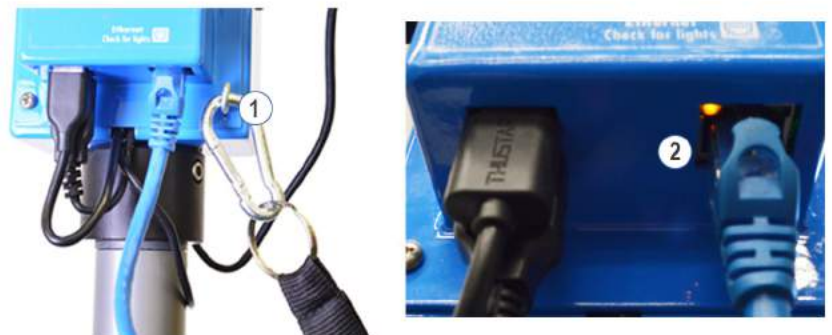
8. Connect the computer power cable to battery (blue). Connect other end into the Power port on the side of the Smart Camera Head.
9. Connect the motor power cable to battery (yellow).
10. Make sure the 2 USB cables next to Ethernet port are plugged in. These cables should never be taken out.



Strain Relief

1. Clip carabiner that is connected to blue Ethernet cable to eye-hook on the back of the Smart Camera.
2. Connect top end of cable to Ethernet port.

IMPORTANT: This step is mandatory. Failure to use the strain relief can damage the Ethernet port of the Smart Camera and is not covered by warranty.



Wireless Network Setup

Location: Endzone

1. Connect POE injector to battery.
2. Connect Endzone Bridge antenna to the POE injector.
3. Press battery power button until Bridge antenna powers ON. (4-5 secs.)
4. Clamp Endzone Bridge to your endzone camera's leg or pole.
5. Aim Endzone Bridge up to Press Box Bridge and level the antenna.
6. 6 blue lights on the side of the Endzone Bridge will light up once it connects with the Press Box Bridge (about 1 minute). Press Box Bridge has to be ON.
7. Connect Smart Camera's 30 ft. Blue Ethernet cable to the POE injector.



IMPORTANT: To test your system you need to connect to either the [SportScopeSideline](#) or [SportScopePressBox](#) Wi-Fi network.

IMPORTANT: Your camera operator needs to be close to (within 15 ft.) the [Press Box iPad antenna](#) or in line with the [Sideline Booster](#). They CANNOT film from the endzone.

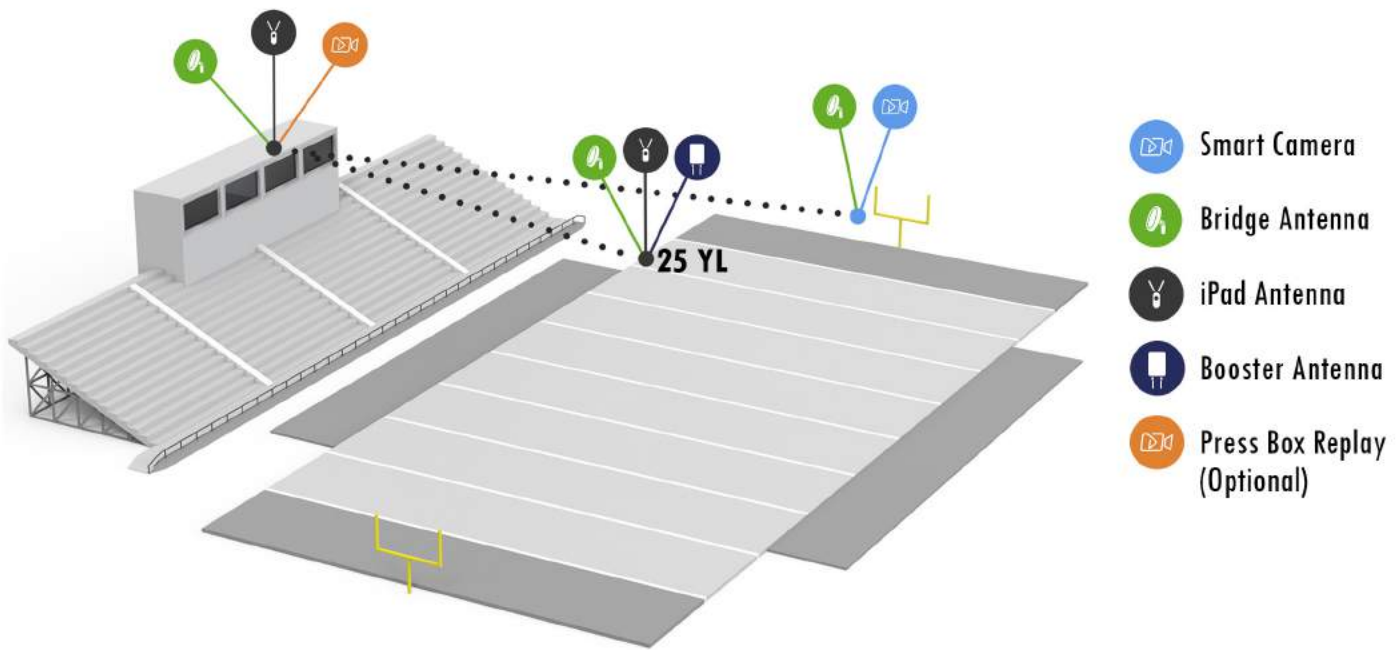
Raise Tower

1. Loosen top knob and slide pole up.
2. Once you feel the stopper, slide the pole down 6 inches.
3. Lock the knob and clip the cable into the carabiner.
4. Repeat with each pole to reach desired height.

IMPORTANT: Always keep two hands on tower poles when raising or lowering for safety.



Wireless Network Diagram



Connecting iPads

1. Download the Sport Scope iPad app from the App Store.



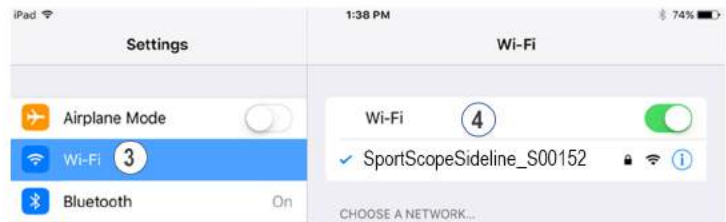
2. Go to your iPad Settings.



3. Select Wi-Fi on the left pane.

4. If you're on the sideline, only connect to the SportScopeSideline network. If you're in the press box, only connect to the SportScopePressBox network.

5. Enter your password.



Controlling Smart Camera

1. Open the Sport Scope app.

2. Go to the Menu in the top left, select Games and then New.

3. Fill out the form, select your cameras, and then select Start Game.

4. Select the arrow on bottom right of screen to bring up iPad controls.

5. You can now hit the Record button to record a clip.

6. After each clip is recorded, all iPads connected will download it for sideline replays.

7. Select the Live box in the bottom left corner.

8. Press thumbs on screen to make joystick and zoom controls appear.

9. Pan, tilt and zoom with your thumbs.



Charging Batteries

Smart Camera Battery

1. The large battery powers the motors and computer of the Smart Camera for 4-5 hrs.
2. Connect battery to included USB wall charger with included micro USB cable.
3. When battery is fully charged, the 4 blue lights turn OFF.



Sony Camera Battery

1. The small cylinder battery powers the Sony camera 4-5 hrs.
2. Connect the camera battery to the USB wall charger with micro USB cable.
3. When fully charged, the battery light will turn green.



Sideline/Endzone Batteries

1. These batteries power the Sideline Switch and Endzone POE injector for 5-6 hrs.
2. Connect the charger to the battery's Input port.
3. Battery blue lights will turn OFF when fully charged.



IMPORTANT: Always charge all batteries before each game.

IMPORTANT: Do not turn the camera OFF during half time. Cylinder battery may turn OFF when the camera is OFF.

Weather Protection

Camera Lens Hood

1. Connect the lens hood to the front of the camera plate with attached screw and wing nut.
2. Place the camera to look through the lens hood.
3. Connect all cables to the Smart Camera.



Rain Cover

1. Place the large opening over the entire Smart Camera and tighten the bungee cord.
2. Leave Velcro opening closed and front facing.
3. Place the small opening around the lens hood and tighten the bungee cord.
4. Make sure all cable are covered. The Ethernet cable (blue) will be exposed down the pole.



Hard Cases

1. Move the cables towards the opening of the cases and gently shut the lid. Do NOT latch the case, this will pinch the cables.
2. There will be a small gap, but rain should not get inside.
3. All iPad, Bridge and Booster antennas are waterproof.

